

Part B: Have a look at the pictures of the marine animals on the next few pages. Sort them into the animal groups down below as best as you can!

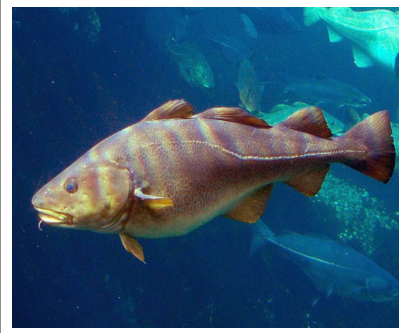
Reptile	Mammal
Amphibian	Crustacean
Mollusc	Fish



Angelfish



Blue Crab



Cod



Dolphin



Emperor Shrimp



Flying Fish



Hammerhead



John Dory



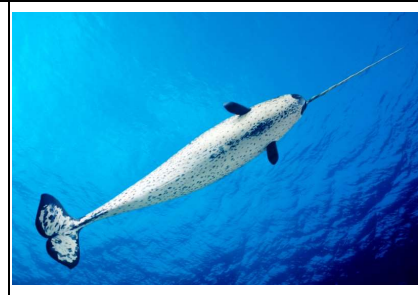
Killer Whale



Lobster



Manta Ray



Narwhal



Pufferfish



Queen Conch



Ringed Seal



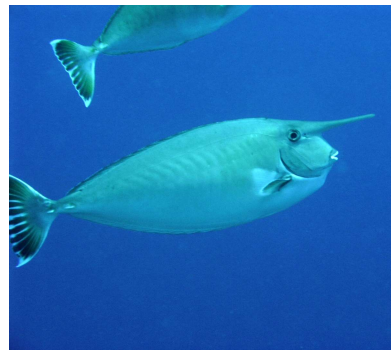
Octopus



Sea Turtle



Trumpet Fish



Unicornfish



Vampire Squid



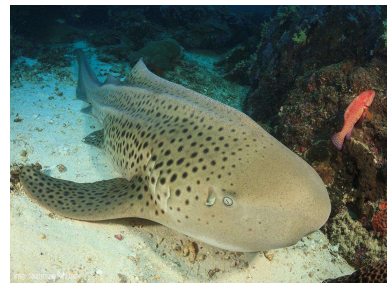
Walrus



X-Ray Tetra



Yellow Tang



Zebra Shark